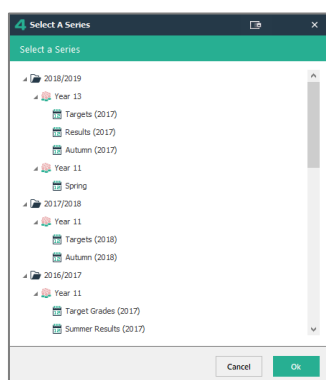
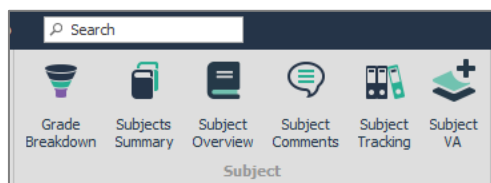


Above: Key Stage 5 Homepage



Above: Change button - The Select Series/Cohort option



Above: The Subject Tools (under the Home tab)

Gender	M
FSM	Any
PP	Any
Ethnicity	Any
House	Any
SEN	Any
G&T	Any
First Lang	Any
Ever6	Any
Groups	
In Class	13BO/1
In Research	Any
In Form	Any
In Subject	Any
Custom	
Prior Attai...	Any
Disadvant...	T

Above: The Filter controls

Getting Started

You can Login to 4Matrix with the login details you have been given. If you are not prompted to login to 4Matrix this means that your system has been setup with Active Directory to use your Windows Login.

The **Homepage** provides an overview of the default series of data. The 4Matrix administrator can import multiple series of data for any cohort, e.g. 2019/2020, Year 13 Autumn.

You can see the available series or select a different one by clicking the **Selected Series** button in the bottom status bar.

Don't be afraid to click on the tables, charts, pupils etc. Data can't be edited or deleted without Admin access, except in the Group Manager or Subject Comments tool, which are covered later in this mini guide.

Exploring a Subject

We can use the group of tools in the ribbon relating to a **Subject** to explore how well subjects compare, how well teaching groups do, and investigate factors which can influence performance.

All subjects can be reviewed using tools such as **Subject Summary** and **Grade Breakdown**.

Individual subjects can be viewed in **Subject VA**, **Subject Overview**, **Subject Tracking** and **Series Comparison** (Series Comparison is located under the 'Series' set of tools).

Most tools allow for a 2nd comparative data series to be activated for monitoring performance over time and include Above, On and Below indicators.

Group and Pupil Filtering

This powerful control can be used to filter by **class**, and **pupil contextual data** e.g., Gender or disadvantaged.

Use the dropdown menu to select the **filter type**:

- Class
- Form
- Ethnicity
- Research
- Advanced

These categories are all self-explanatory, except for **Advanced** – this option allows the user to **apply multiple filters** at the same time, for example, all male pupils in class 13BO/1 with a Disadvantaged status of T (True), as shown in the figure to the left.



Above: Subject Overview



Above: Subject VA Table



This tool shows the performance of **key groups of pupils/classes** in each subject under the headings of Entries, Grade Performance, APS and Value Added. It is designed to investigate the extent of **‘gaps’** between key groups and their converse, i.e. Males and Females, Disadvantaged and Non-Disadvantaged, as well as the option to compare to the whole cohort’s headline results in the subject.

The **Rows** panel allows us to select the key groups which we would like to display. 4Matrix Admin users can create **custom groups** and comparison rows. Rows can be expanded by clicking on the '+' to show student level data.

This tool can also be used with a **Target grades series** (or any other comparative series) to compare whole cohort and key group performance in terms of student's **Above**, **On** and **Below** a target grade. Users can **bulk-export** this information to Excel for further processing, via the File menu.

Subject VA assesses how much progress students have made from the end of Key Stage 4 to the end of their level 3 qualifications when compared to students with the same KS4 prior attainment, as per DFE calculations/Ready Reckoner*.

In **Chart View**, the chart plots pupils in accordance with their KS4 baseline (X-Axis) and their KS5 grade in the active series (Y-Axis). The blue line represents the national average outcome for different prior attainment bandings*. The data can also be viewed in **Table view**.

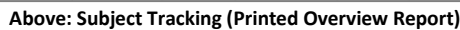
The **Subject Stats** box in the bottom left of the display includes some of the key figures for the selected subject; the number of entries, the subject's APS and the VA score.

A **positive VA score** signifies that the pupil (class/group/subject) has performed better than students with the same KS4 prior attainment in that subject. **Negative VA** signifies that they have performed poorer than students with the same ks4 prior attainment in that subject.

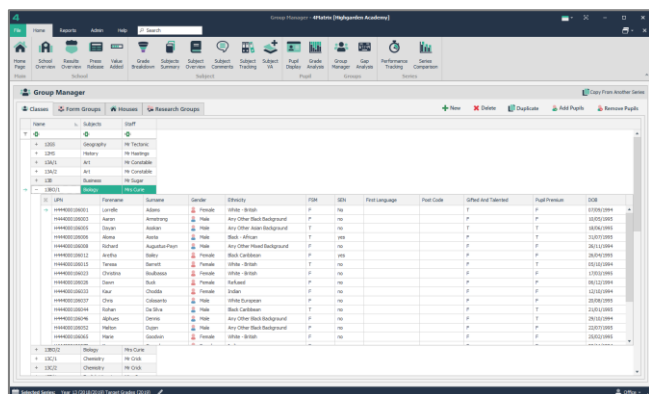
The **Value Added tool** displays the student-level scores for all subjects. VA is reported in points i.e. the difference in grade values. For a full A Level qualification, the difference between each grade is 10 points. A difference of 15 points in an A Level qualification would therefore indicate a grade and a half difference.

The overall subject and cohort VA are reported in grade format. For example, a subject VA score of +0.25 in Physics indicates that pupils in this subject are, on average, attaining a quarter of a grade higher than students nationally with the same KS4 prior attainment as them.

**The coefficients (estimated scores) are based on previous cohort's national data.*



The grades can be displayed as numbers or percentages, and all information can be exported into Excel from the **File** menu.



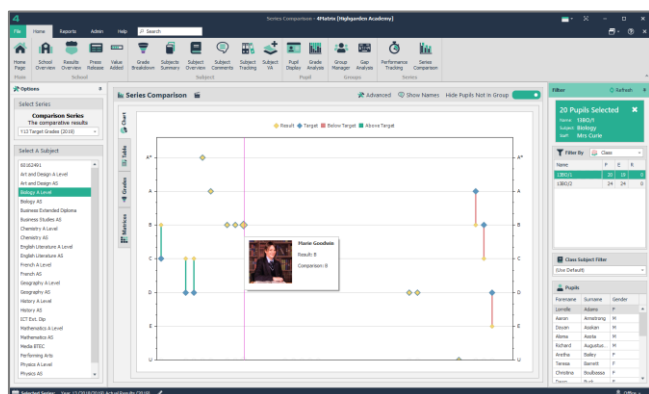
Above: Group Manager tool

Group Manager/Research Groups

Classes, Form Groups, Houses and Research Groups are located under the **Groups Manager** tool, to **support useful investigations** into the performance of different groups. Here, we can select pupils with a shared feature, and study them as a **Research Group** across other tools in 4Matrix.

For example, we might wish to find out if students with high KS4 prior attainment (e.g. GCSE grades 7-9) continue to achieve high grades at A level. We might consider any useful investigations that could relate to pupils studying a specific subject, by considering contextual issues, or from a knowledge about pupils' dispositions.

Any user can define a group by choosing **Create New** and then **Add Pupils**. Hold CTRL or SHIFT to select multiple pupils.



Above: Series Comparison (Chart View)

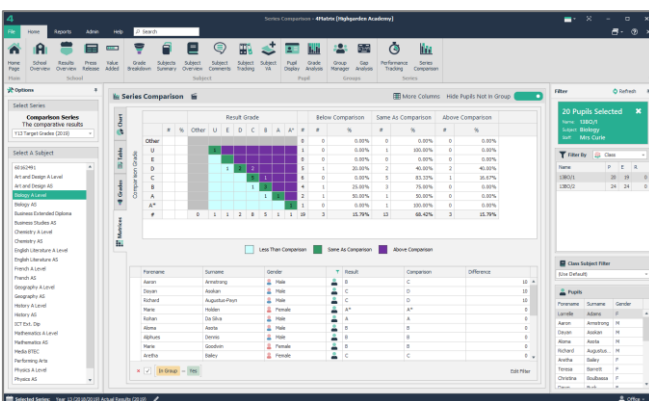
Series Comparison

This tool is found under the **Series** group of tools. It will **compare one data series with another** - usually the current series with a target series, but any 2 series can be compared. The display will show pupils who are **Above**, **On** or **Below** target. The tabs to the left of the main chart view allow the user to access the data in different ways – the views are **Chart**, **Table**, **Grades** or **Matrices**.

Above: Series Comparison (Table View)

Table view is especially useful. The difference is shown in points between the result and the comparison. For example, in an A level subject, there are 10 points between each grade, so a difference of -20 equates to 2 grades below comparison. The average difference for the subject cohort is also shown at the bottom of the screen.

Grades view displays a bar chart that compares the total number of grades obtained in both the outcome and comparative series (purple and blue respectively). If the biggest difference between results and comparisons is seen with high top-end grades you could ask, for example, *is teaching differentiated enough so it challenges and stretches high ability students?*



Above: Series Comparison (Matrix View)

The **Matrices view** will show the numbers of pupils that have achieved each combination of grades when comparing the two series.

The **File menu** contains a teacher-friendly **photo report**.

Further Reading and Getting Help

The Help tab in 4Matrix contains links to the full application guides, our support portal and News feed.

Website: www.4matrix.com

Support portal: <https://help.4matrix.com/>

Facebook: www.facebook.com/groups/4matrixdata/

Twitter: <https://twitter.com/4matrix>